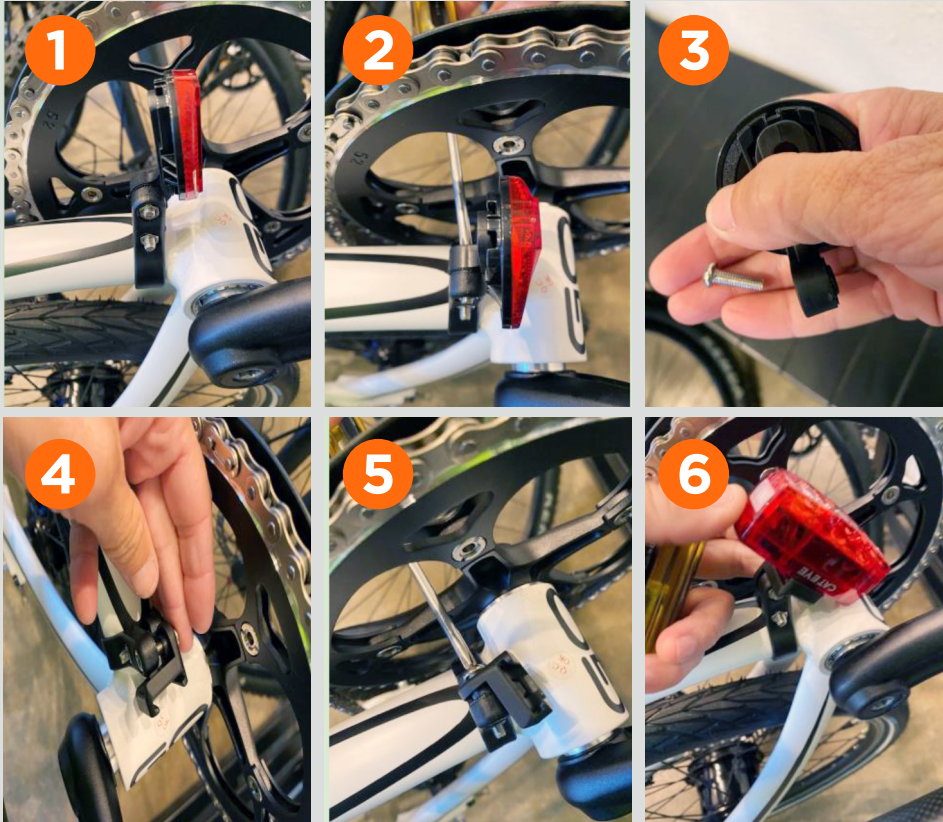


HOW TO INSTALL THE CATEYE VIZ450 TAILLIGHT ON A LONG-STRIDE BIKE

If you have your rear reflector on your GO, follow these steps:



2. Use Philipshead screwdriver to remove reflector screw
3. Use the screw from the reflector
4. Attach the bracket with the reflector screw
5. Use Philipshead screwdriver to secure bracket to reflector clamp
6. Snap the Viz450 taillight into the bracket

If you do not have a rear reflector on your GO, follow these steps:



2. Insert spacer to clamp
3. Wrap clamp around GO frame
4. Use included screw to attach bracket to clamp
5. Use Philipshead screwdriver to secure bracket to clamp
6. Snap the Viz450 taillight into the bracket